

Screw Machining Facility Highlights



- 45,000 square feet
- 250 employees
- In-House Tool Room

- High Precision Cylindrical Grinding with IPG (up to 1.5 mt)
- Centerless Grinding with IPG
- CNC Friction Welding
- CNC Swiss Type Sliding Heads
- CNC Turning (2 mt)
- CNC Vertical Machining Centers (2 mt)
- Auto Tapping and a Captive Phosphating Plant



Plant



Capabilities

- Tool Design & Development
- Tool Room
- Precision Machining Shop
- Plastic Processing
- Hi-speed Stamping
- Forging
- Electro-Mechanical Assemblies
- Design & Manufacture of SPMs, Jigs & Fixtures
- Assembly
- Quality Control

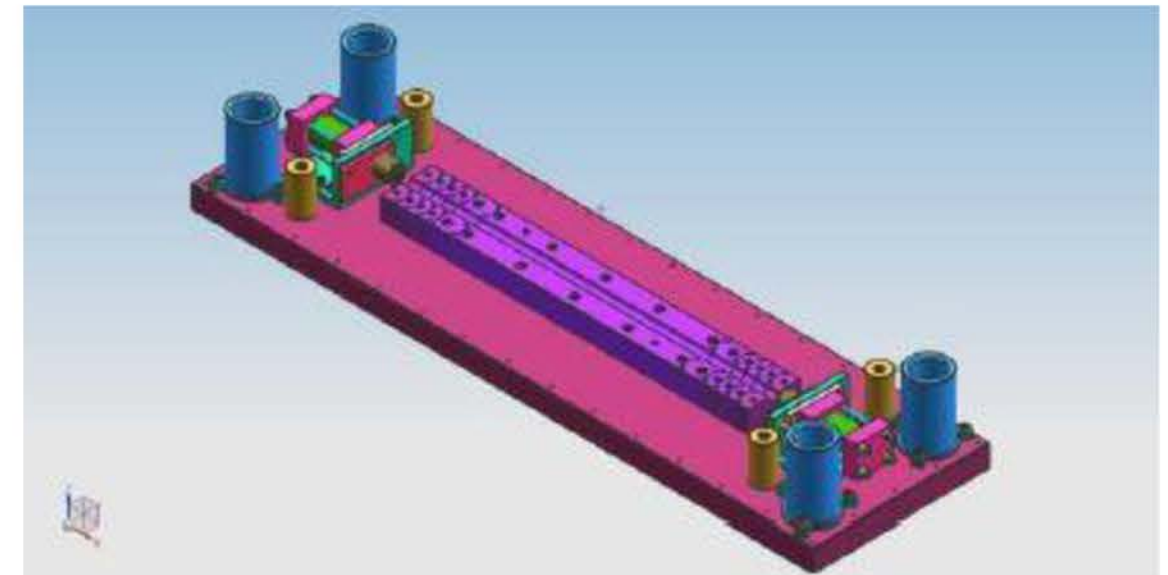
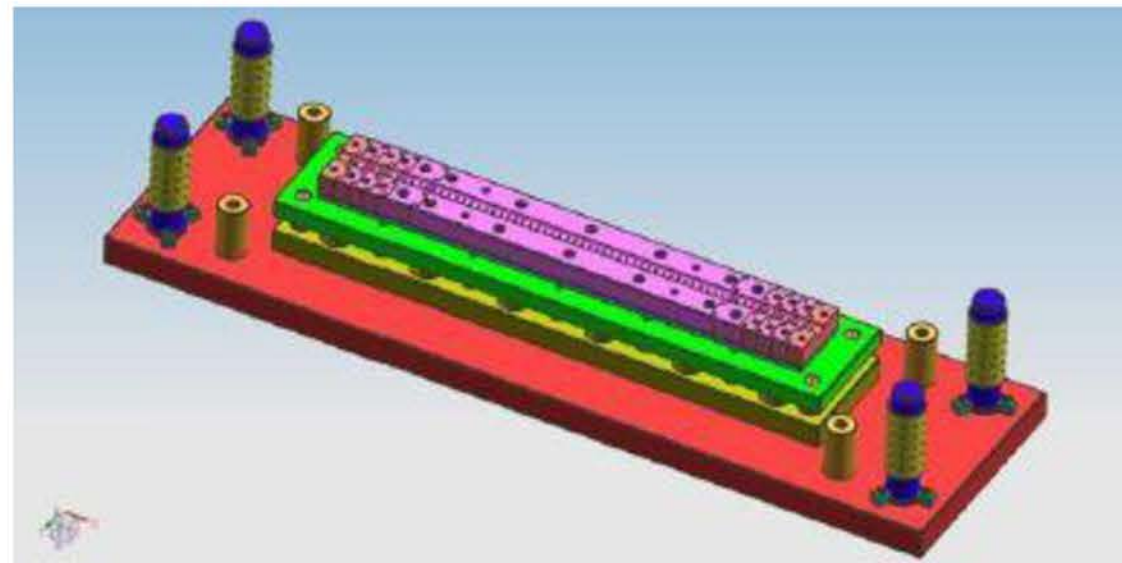
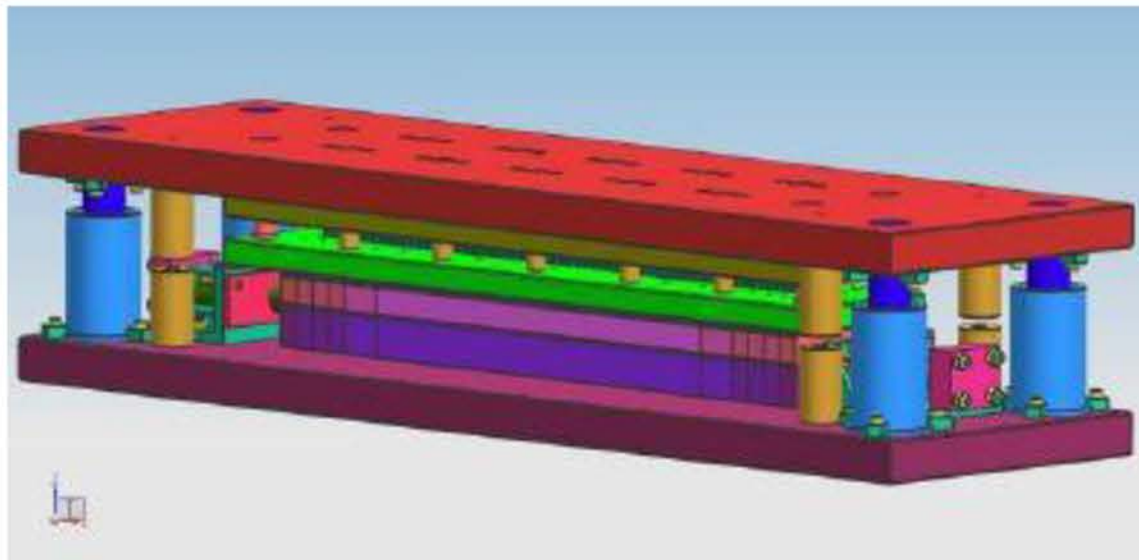
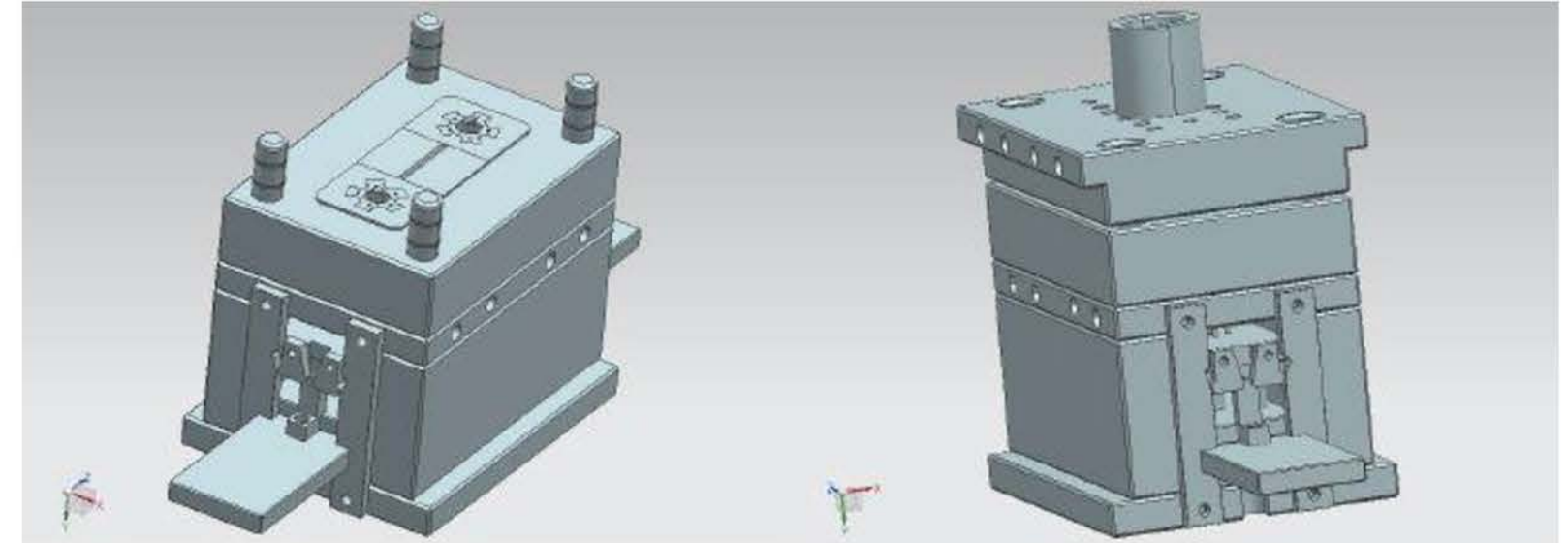
Qualified Sources for

- Anodizing
- Zinc Plating
- Nickel Chrome Plating
- Gold & Silver Plating



Design & Development

- Design of multi cavity mold tools (32 cavity)
- Design of over-molding tools
- Design of Progressive press tools (30 stage)
- Design of Hydro Forming Tools
- Design of Jigs & Fixtures



Tool Room

- State-of-art captive tool room
- Expertise in both Mould & Die making
- CNC Wire Cut
- CNC Die-sinking EDM (4 Axis)
- High Speed Machining (5 Axis)
- Jig Boring



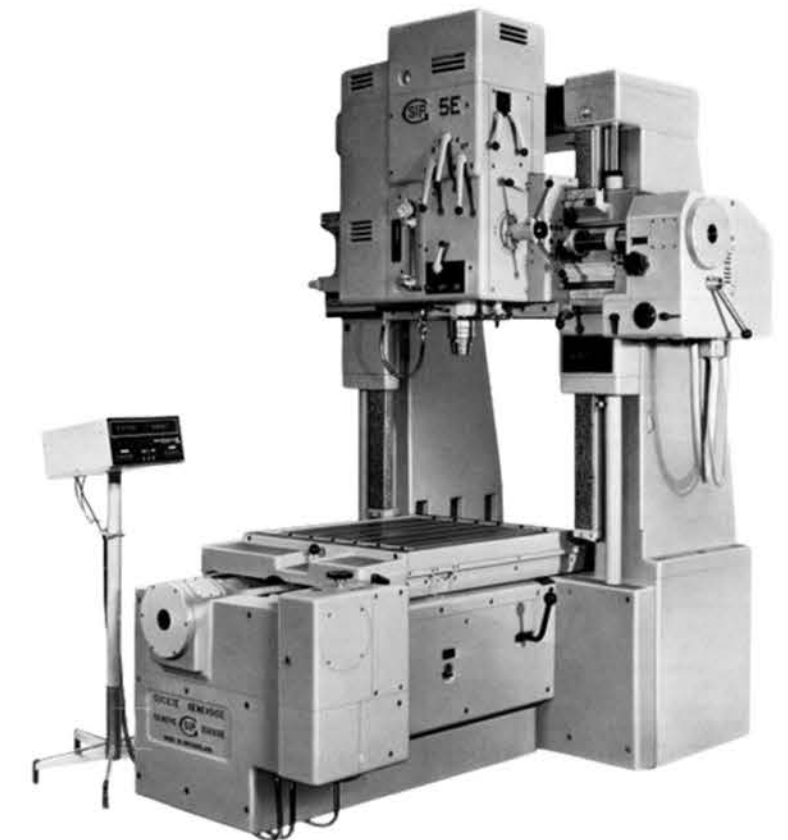
Charmilles CUT 200 Sp (CNC Wire Cut)



Makino F5(VMC)



CHMER D433CL (CNC EDM)



SIP 5E (Jig Boring)

Precision Machining

- State of art manufacturing setup
- Ideal for Batch Production & Mass Production
- 5-Axis Machining Centres
- Turn-Mill Centres
- High accuracy, consistency & repeatability
- CNC VMC – 18 Nos
- CNC Turning – 12 Nos



AMS Acer XL (5-Axis & 3-Axis)



DMG MORI CMX 600 (4-Axis)



DMG MORI Ecomill 600v



DMG MORI DMU 50(5-Axis)



DMG MORI NLX1500 (Turn-Mill)



ACE Jobber XL (CNC Turning)

Stamping & Hydro-Forming

- Captive Press Shop
- 240 spm High speed stamping with auto-feeder
- Mechanical and Hydraulic Presses
- Manufacturing line for Manifold production



Promecam Hydraulic Press (120 Ton)



Dobby Power Press (25 Ton)



Safan Hydraulic Press (80 Ton)

Plastics Processing

- Thermoplastics and Thermoset processing
- Expertise in Engineering plastics & Over molding (Insert molding)
- Microprocessor-controlled machines with high speed – high pressure injection units
- Temperature controlled Hopper – Dryers
- Mold Temperature Controllers



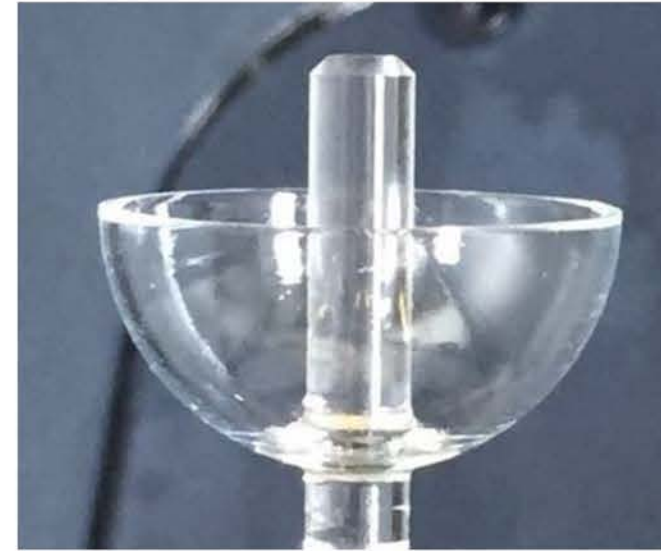
ENGEL Victory 50 Tons



ENGEL Victory 120 Tons

Ceramic Machining

- Machining of Zerodur & ULE
- Machining of Quartz
- Machining of Carbide Ceramics
- Spherical & Aspherical profiles
- IIR Mirrors



Quartz Part



Zerodur Part

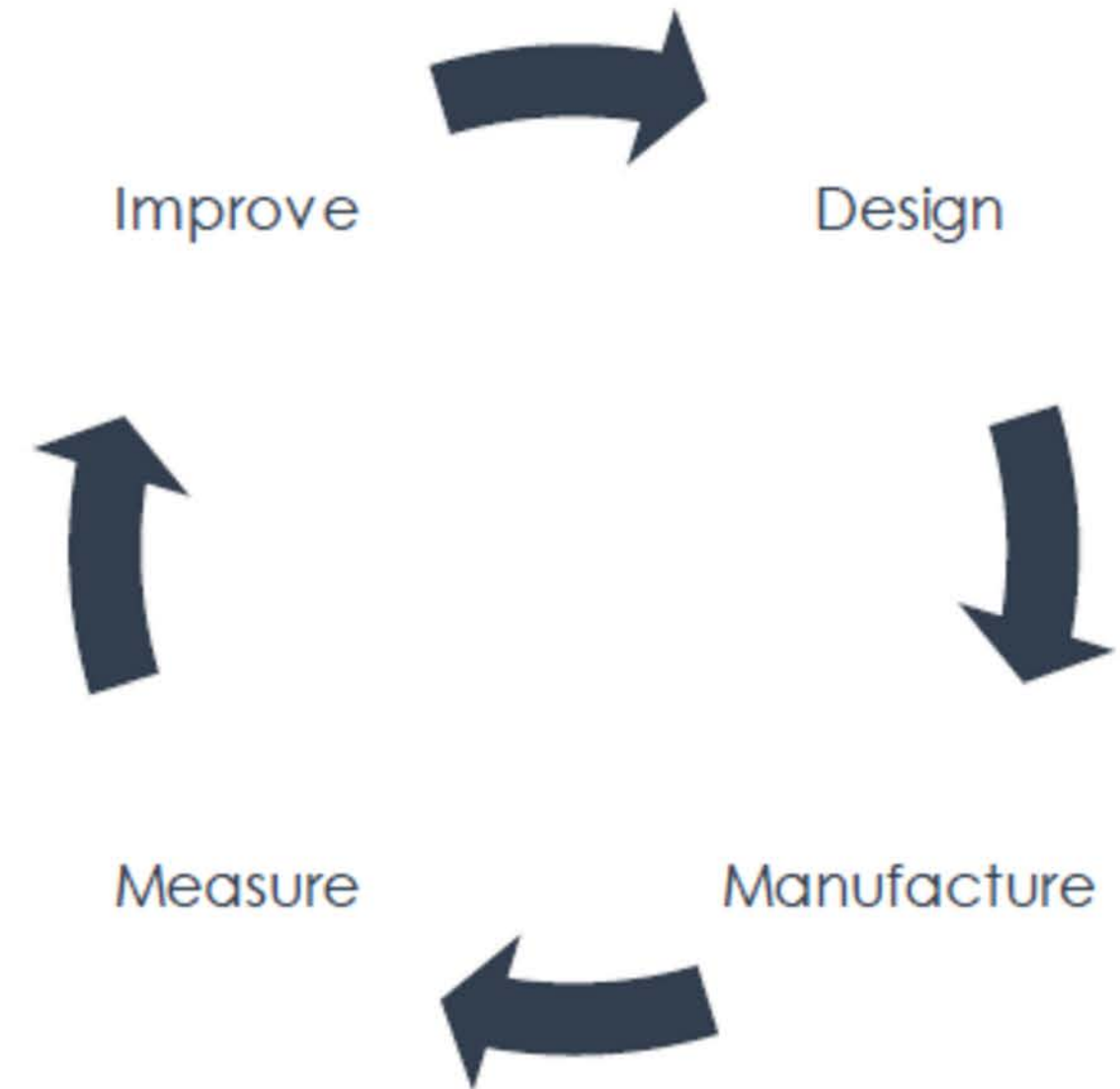
Hydro-Forming

- Manifolds for Automobile Heat Exchangers
- Manifolds for Earth Movers
- Manifolds for Domestic Heat Exchangers
- Manifolds for Industrial Heat Exchangers



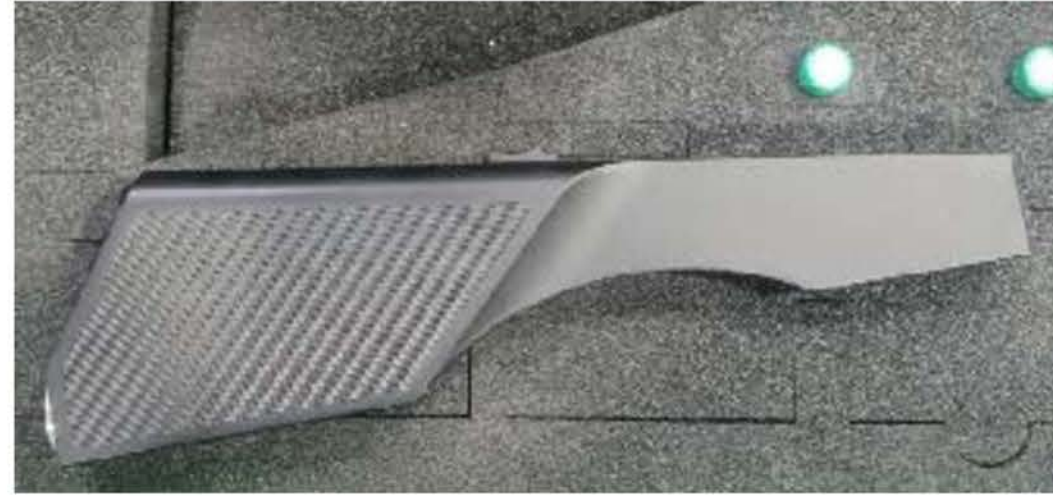
Quality Systems

- ISO 9001:2015
- Vendor qualification
- Inward material inspection
- In-process inspection
- Well documented process details
- Traceability
- PPAP Level-3 Documentation
- Cpk analysis
- AQL 2.5,1.5,1
- Ready for AS 9100 Rev D



Quality Equipment

- CMMs
- Profile Projector
- Digital Height Gauge
- Air Gauges (LC 0.5 μ m)
- Roughness Tester
- Lead Test



Lead Test Equipment



Surface Roughness Tester



Zeiss Contura G2 CMM (7.10.7)



Mitutoyo PJ - P1020A.



RDS Articulating Probe holder



Trimos Vectra Height gauge

Machinery



Swiss Type Lathe (Ø24 x 500 mm)



CNC Twin Turret Lathe (1000 mm)



CNC Lathe (2000 mm)



CNC Cylindrical Grinding (1200 mm)



CNC Cylindrical Grinding (600 mm)



CNC Friction Welding

Machinery



CNC VMC (500 mm)



CNC VMC (1500 & 2000 mm)



CNC Turning (600 mm)



CNC Cylindrical Grinding (1500 mm)



CNC Cylindrical Grinding (600 mm)



Facing – Centering Machine

List of Machinery

Sl No	Description	QTY	Accuracy	X	Y	Z
1	Doosan DNM 6700L	1	10 µm	1500	670	570
2	MAKINO F5	1	5 µm	900	500	450
3	AMS 1020 V	1	20 µm	1020	750	600
4	DMG MORI CMX 600v - 4 Axis	2	6 µm	600	500	500
5	Okuma MCV 3016	4	6 µm	800	410	410
6	DMG MORI 600V	3	6 µm	600	550	510
7	AMS ACER XL	2	15 µm	800	510	510
8	AMS ACER XL (5-AXIS)	1	15 µm	800	510	510
9	AMS MCV 350	3	10 µm	400	350	350

CNC Vertical Machining Centers – 18 Nos

Sl No	Description	QTY	Accuracy	Dia	Length
1	Palmary OCD 30150 IPG Marposs	1	1 µm	300	1500
2	Palmary OCD 30100 IPG Marposs	1	1 µm	300	1000
3	Palmary OCD 30650 IPG Marposs	1	1 µm	300	650
4	Palmary OCD 30600 IPG Marposs	1	1 µm	300	600
5	Micromatic GT CLG 5025 (Centreless Grind)	2	0.5 µm	120	600

CNC Grinding Machines – 6 Nos

Sl No	Description	QTY	Accuracy	Dia	Z	Y
1	DMG NLX 2500 Y - Turn Mill (Y-Axis)	1	5 µm	390	625	250
2	Doosan Puma TL2000 L (Twin Turret)	1	10 µm	500	1050	-
3	Tsugami M08JLS-II	2	5 µm	300	600	-
4	ACE SJE 10 LM	4	10 µm	350	600	-
5	ACE Jobber XL	2	10 µm	200	400	-
6	ACE LT 30	1	10 µm	480	1500	-
7	ACE Vantage	1	15 µm	560	1270	-
8	ACE ST 50125	1	15 µm	320	1250	-
9	ACE ST 60125	3	10 µm	320	1250	-

CNC Turning Centers – 23 Nos

Sl No	Description	QTY	Accuracy	Dia	Z	Y
1	Tsugami B0385 III with Bar Feeders (5-Axis)	3	4 µm	32	400	16

CNC Swiss Turning Machines – 3 Nos



List of Machinery

SI No	Description	QTY	Accuracy	X	Y	Z
1	CHARMILLES Robofil 310 CNC Wire EDM	1	5 µm	400	250	400
2	CHMER D433CL+50N CNC Die Sink EDM	1	5 µm	400	250	250
3	Electronica ZNC Die Sink EDM	2	10 µm	300	200	250
4	SIP SE Jig Boring	1	6 µm	600	400	650
5	Micromatic Cylindrical Grinding	1	3 µm	300	250	180
6	Sharada Cylindrical Grinding	1	5 µm	300	250	200
7	Jones & Shipman SP530 Surface Grinding	1	5 µm	500	300	250
8	Karl Hurth Milling	1	10 µm	250	250	250
9	Makino Milling	1	20 µm	500	250	250

Tool Room Machinery

SI No	Description	QTY	Accuracy	Dia	Length
1	Taurus CNC Facing & Centring	1	10 µm	300	1500
2	Unitech Friction Welding	1	50 µm	40	700

Special Purpose Machines

SI No	Description	QTY	Capacity
1	Safan Press Break (2.5 mt)	1	80 Tons
2	Dobby Power Press	1	20 Tons
3	Rishi Power Press	1	10 Tons

Sheet Metal Machinery

SI No	Description	QTY	Capacity
1	Engel e-Victory	1	50 Tons
2	Engel e-Victory	1	120 Tons
3	RAS 50T (Transfer Mould)	2	40 Tons

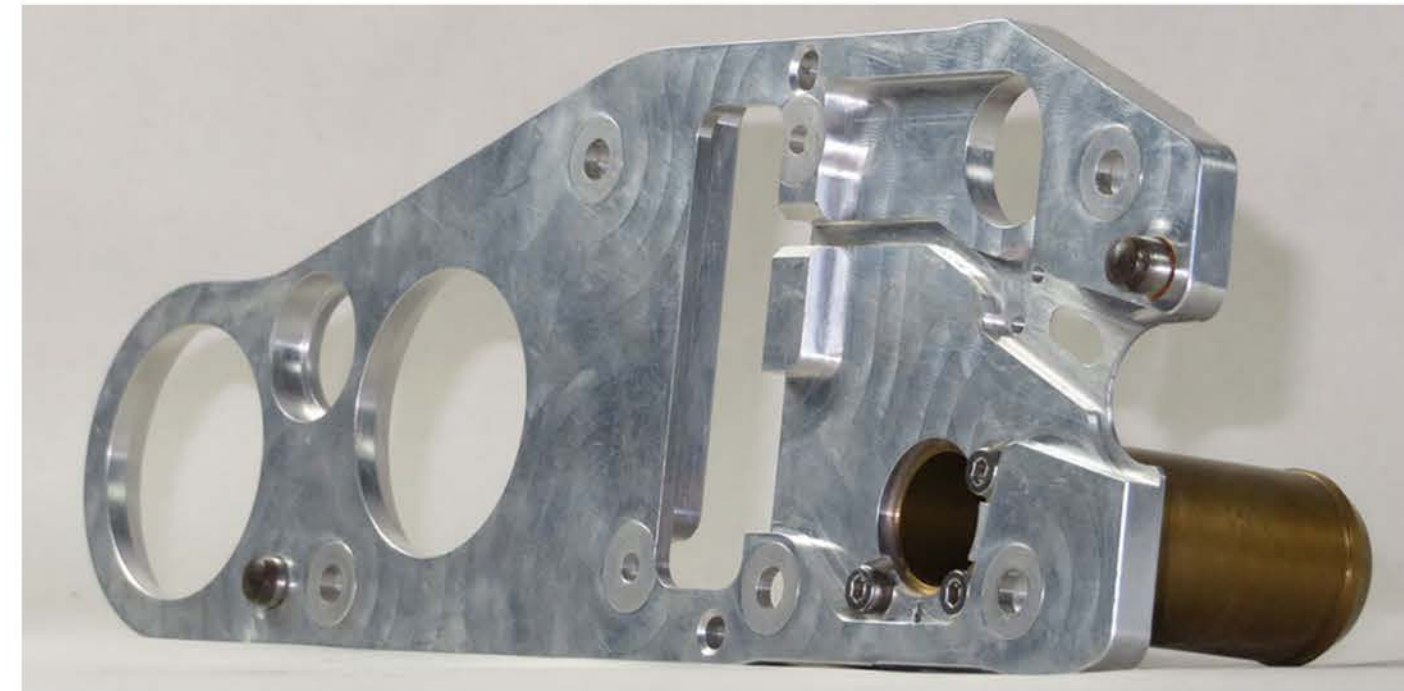
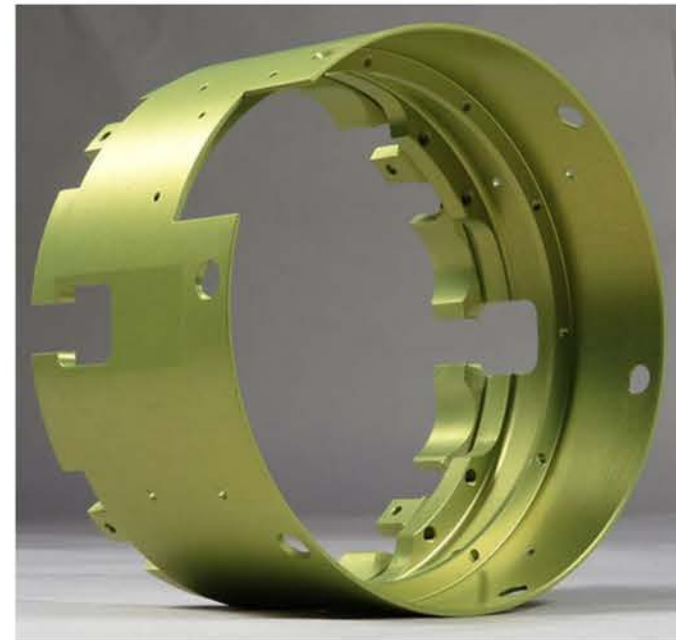
Plastic Processing Machinery

SI No	Description	QTY	Size
1	Auto Tapping Machine	1	M16
2	Auto Tapping Machine	1	M30
3	Auto Circular Saw	4	80 mm
4	H Frame Band Saw	1	200 mm
5	Band Saw	1	200 mm
6	High Speed Drilling	6	1/4"
7	Drilling Machine	1	1/2"
8	Phosphating Plant	1	-
9	Reaming Machines	1	1/4"

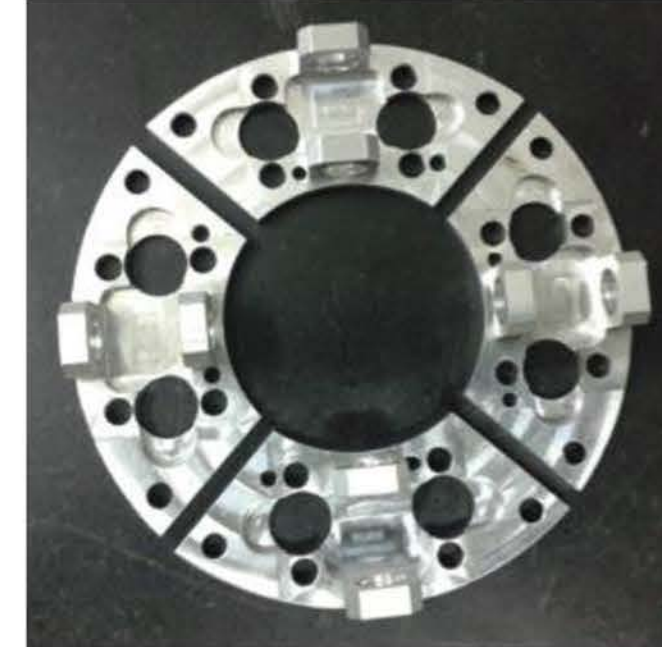
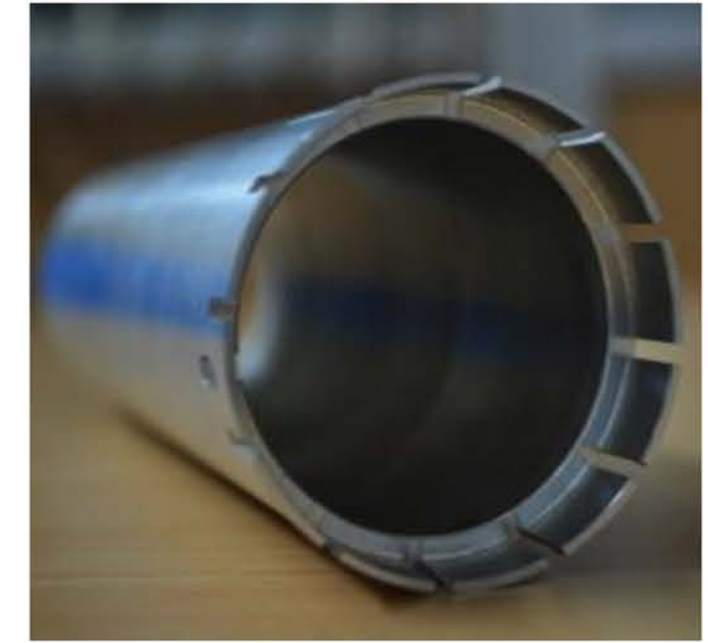
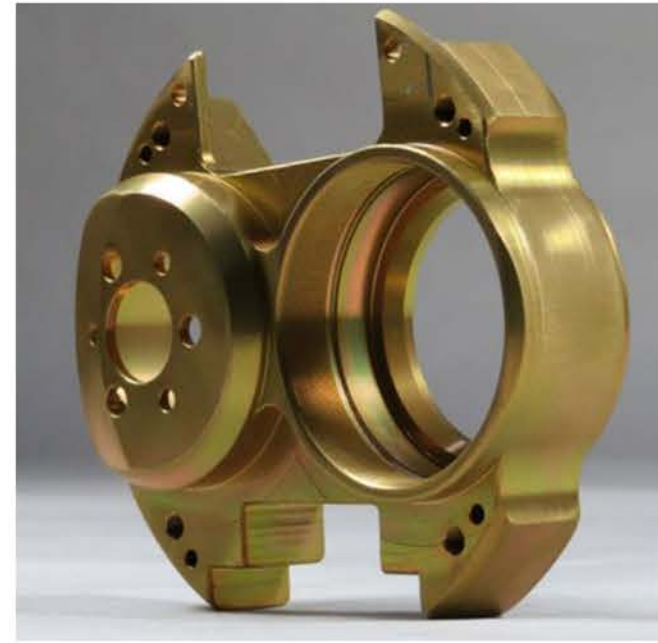
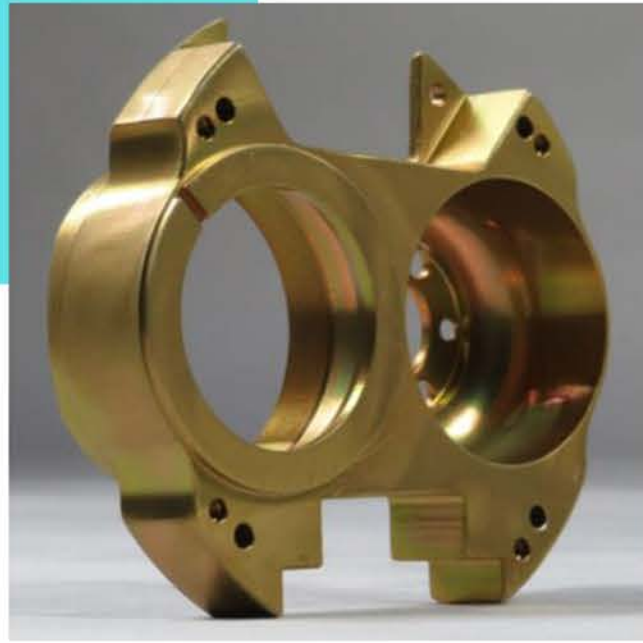
Allied and Misc. Machinery



Product - Precision Machining



Product - Precision Machining



Product - Precision Machining



Shaft – Sizes ranging from \varnothing 8 to 150 mm & Length upto 1500 mm

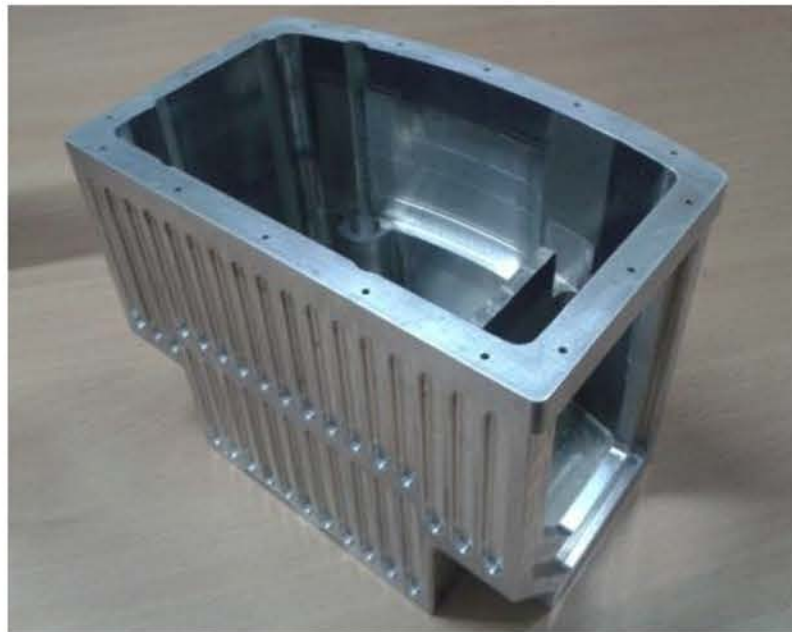


Shafts – Friction Welded & Phosphated (L/D ratio up to 25)



Shafts – Oil seal Bearing – Zero Lead

Product - Precision Machining



Cast and Machined Components

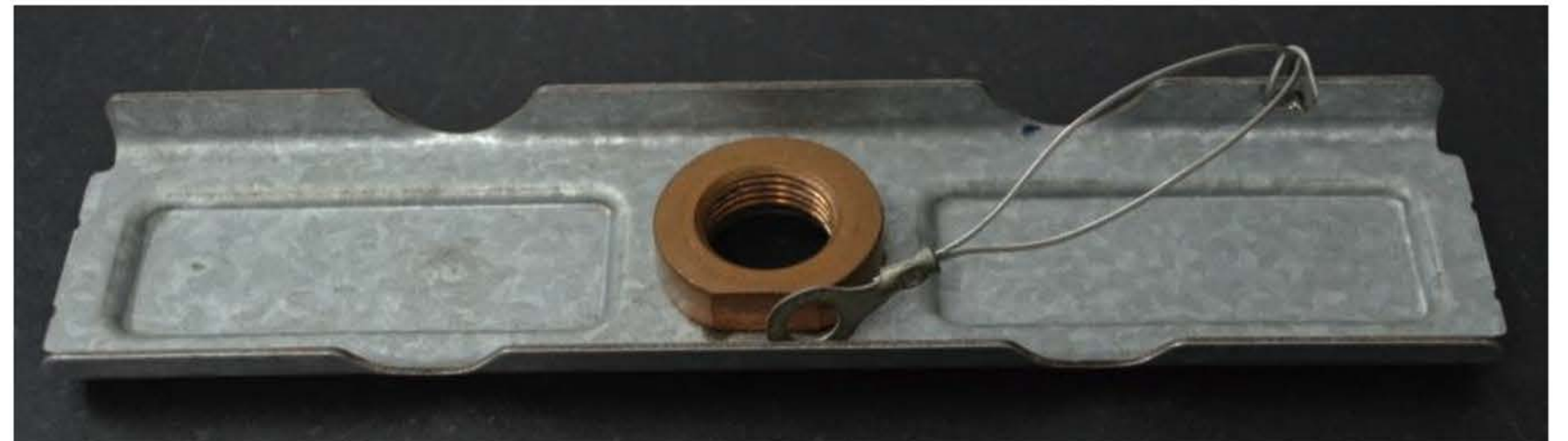
Product - Injection Molding



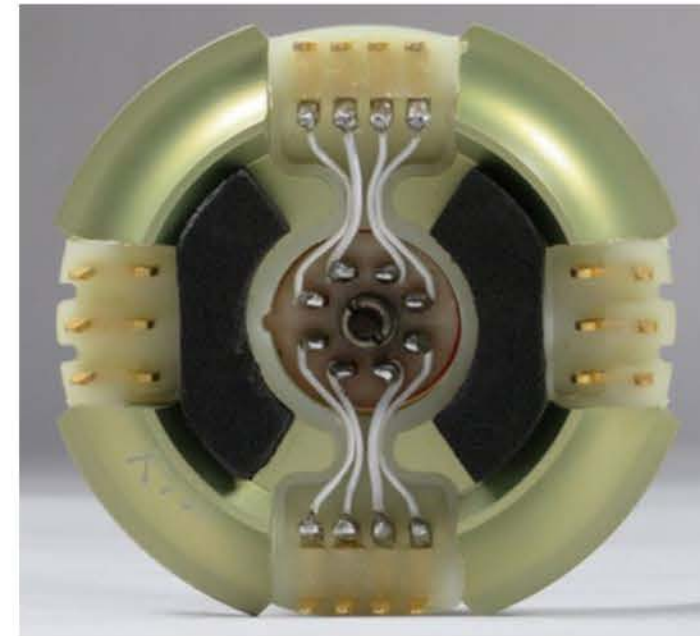
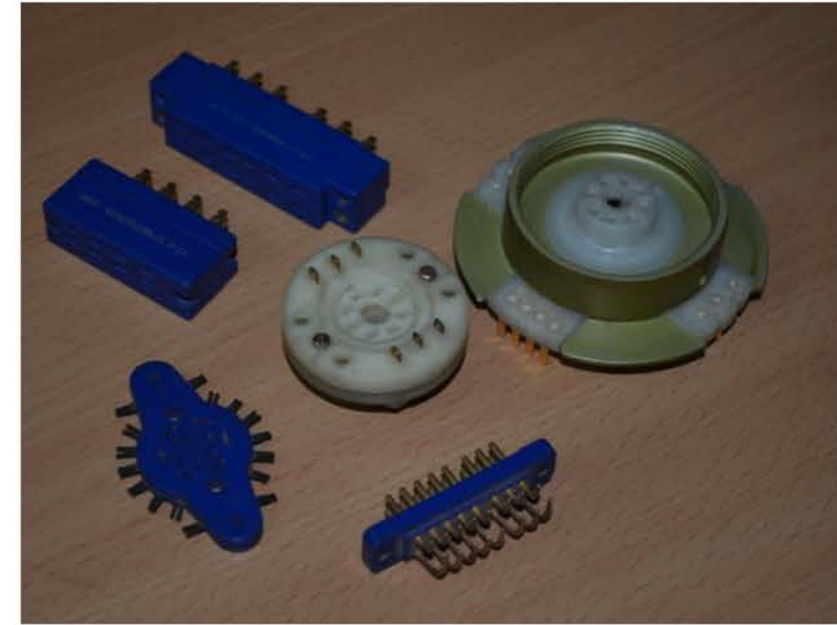
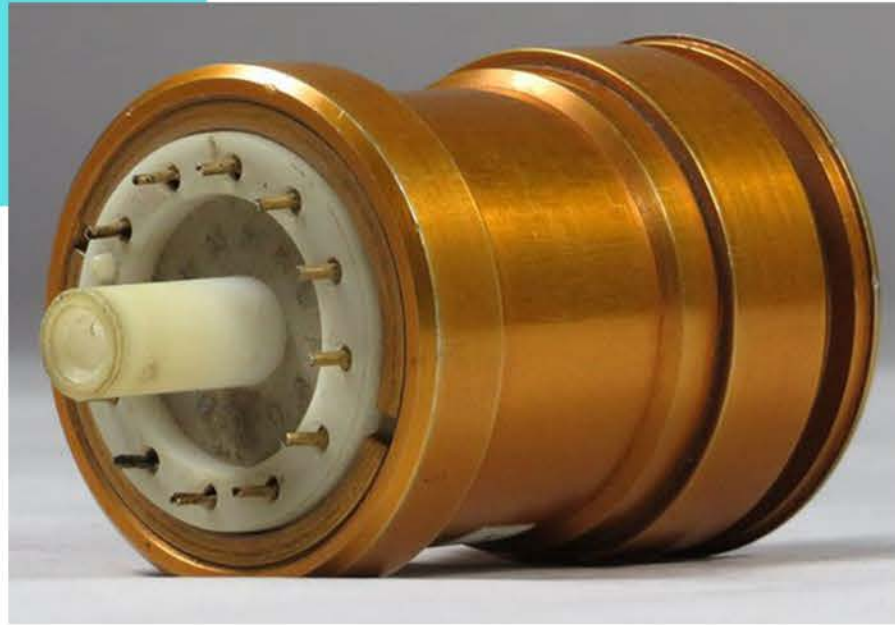
Product - Transfer & Compression Molding



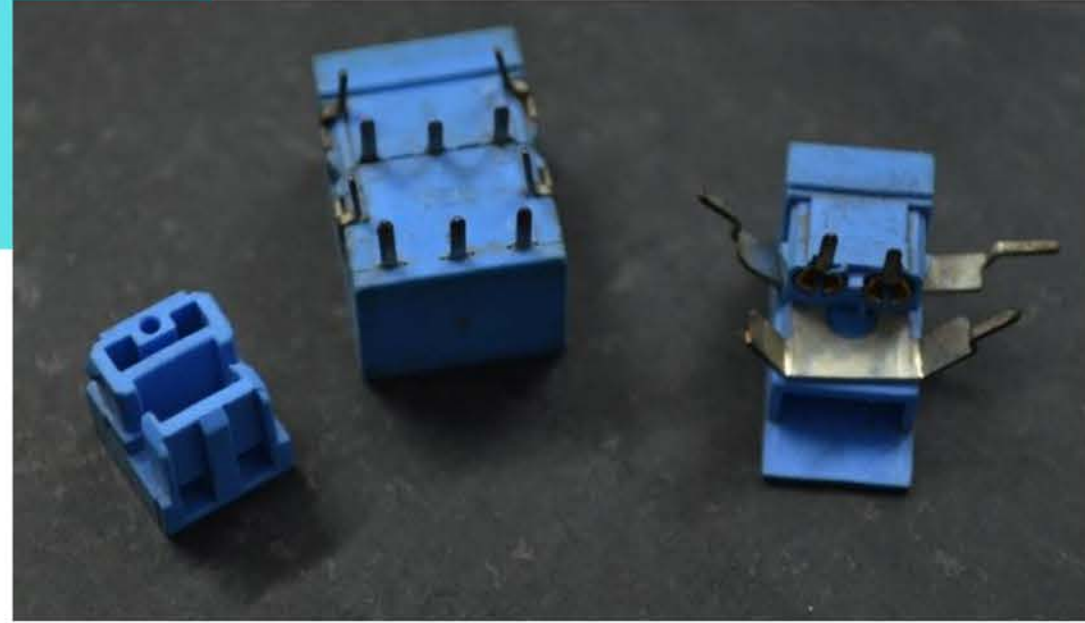
Product - Sheet Metal



Product - Electromechanical Assemblies



Product - Sub-Assemblies



Industries Served



Automotive



Electronics



Industrial Machinery



Medical Machining



Off-Highway Machining



Oil & Gas



Our Services

- Just-In-Time (JIT) deliveries from our New Jersey warehouse
- Engineering support from U.S. and India teams
- Prompt on-site assistance

*50,000 sq. ft.
warehouse in
Dayton, New Jersey*

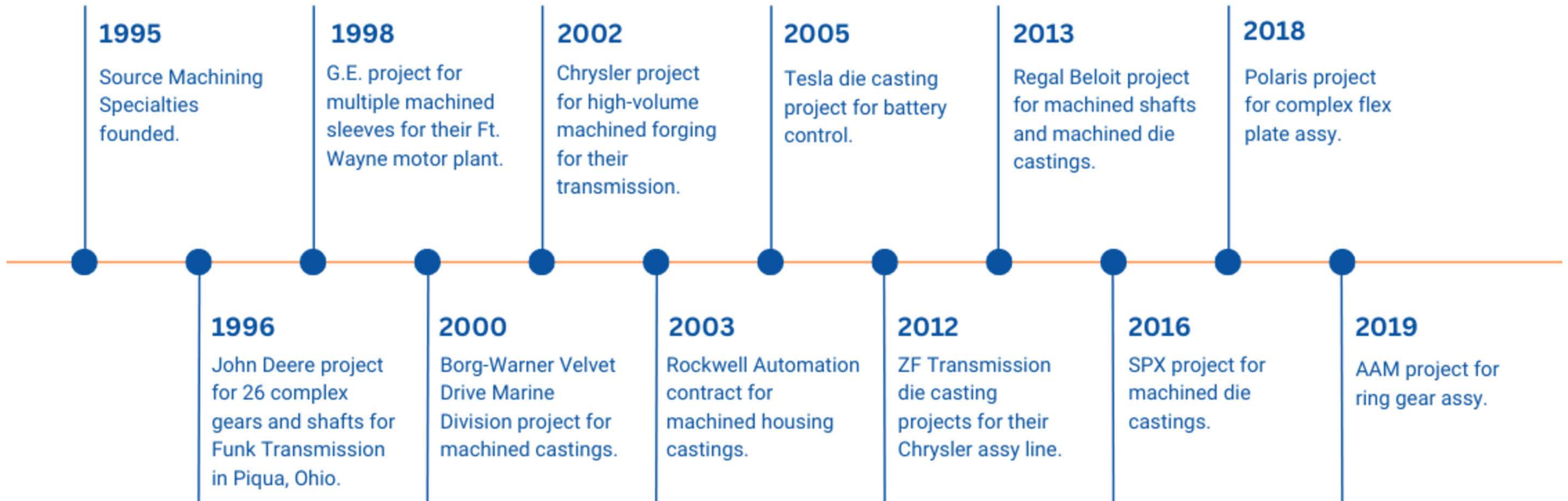


Our Clients



Our Journey

Over the years, we've had the privilege of partnering with industry-leading clients on a wide range of projects.



Our India Team

Leading our India team is Mr. Deepak Labba, who brings over 30 years of experience from GE and RRX, managing a \$50 million annual spend.



Deepak Labba

Head of India Strategy & Operations
+91 98498 40236
deepak@smspecialties.com



Urvi Kore

Client Engagement Specialist
+91 83295 22459
urvi@smspecialties.com



Our US Sales Team

Our dedicated professionals combine over 30 years of manufacturing expertise to deliver high-quality components for OEMs across a wide range of industries.



Avi Tobias

Director of OEM Market Development
908.705.7600 (cell)
avi@smspecialties.com



Harish Nagpal

Product Development Manager
908.692.8024 (cell)
harish@smspecialties.com



Judah Barak

OEM Business Strategist
973.567.2549 (cell)
judah@smspecialties.com

Contact Us Today

Judah Barak

OEM Business Strategist

judah@smspecialties.com | 973.567.2549 (cell)

Resilient supply chains, powered by India

